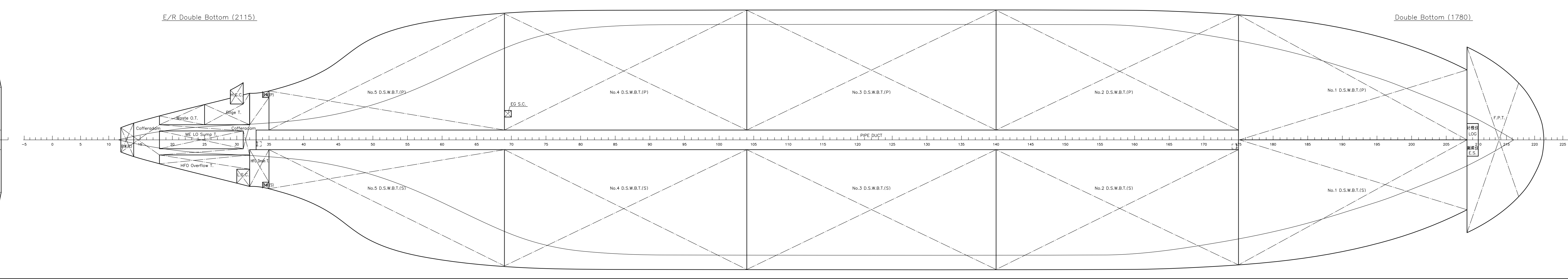
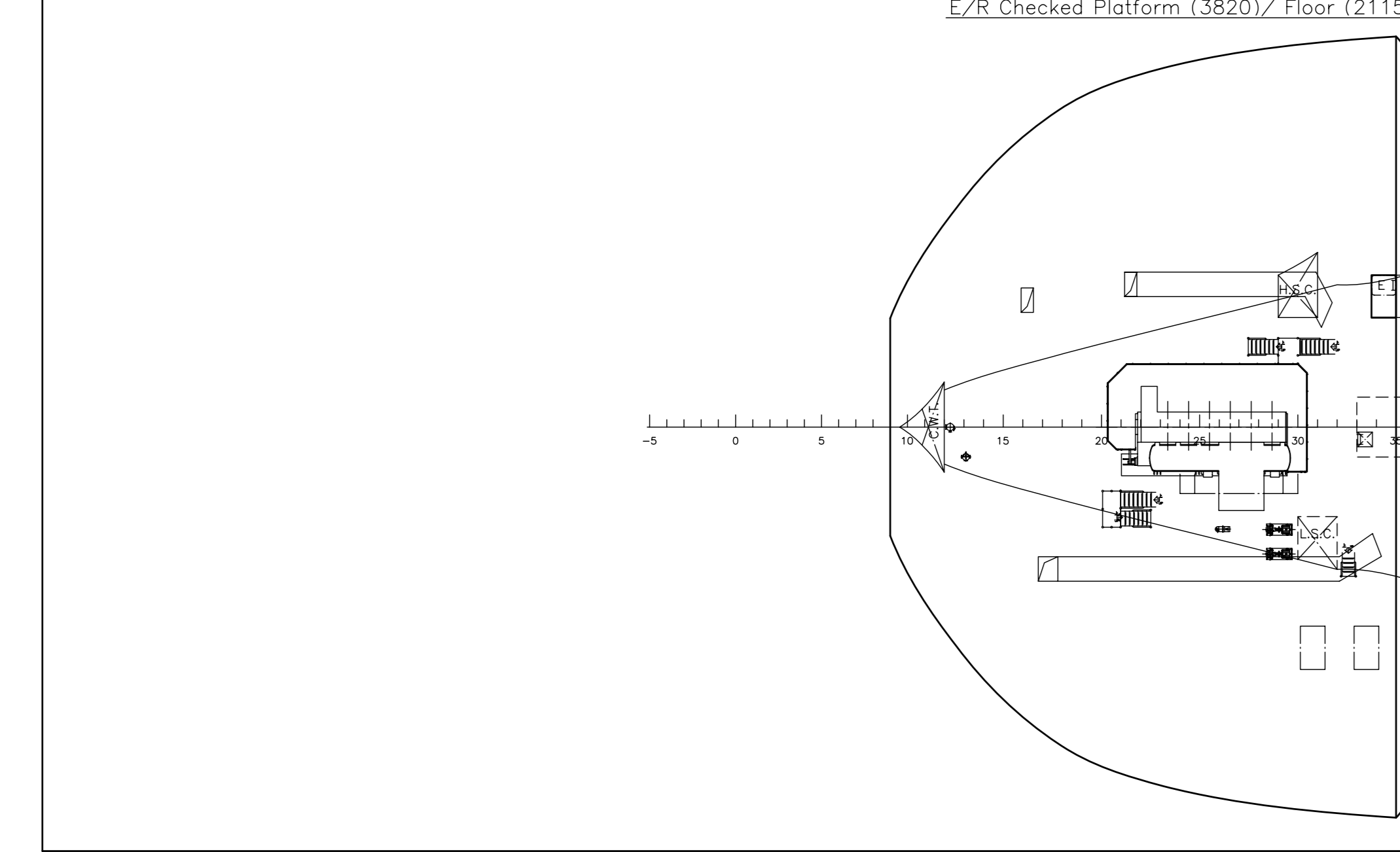


PRINCIPAL PARTICULARS

LENGTH O.A.	189.99 m
LENGTH B.P.	185.00 m
BREADTH MLD	32.26 m
DEPTH MLD	18.00 m
DESIGN DRAFT	11.30 m
SCANTLING DRAFT	12.95 m
DEADWEIGHT (AT SCANTLING DRAFT)	abt. 58,000 t
MAN ENGINE	
TYPE	MAN-B&W 6550MC-C7 1st
MCR/SACR/CSR	8,480kW/127rpm/ 8,700kW/120rpm/ 7,365kW/113.7rpm
SERVICE SPEED (AT DESIGN DRAFT)	abt. 14.30 kn
COMPLEMENT	25 Persons
CLASS BY	I ✦ CSR Bulk carrier ESP, BC-A, CRAB(2), Holds 2, 4 may be empty.
	unrestricted navigation, Veristar-HULL, INWATERSURVEY
	✦ AUT-UMS, MGN-SHIFT



船名	BV	设计阶段	竣工设计
CLASS	58000 DWT BULK CARRIER	DESIGN STAGE	FINAL DESIGN
SHIP NO.		图号	DY3071
		图名	总布置图
		图数/PAGE	1/1
		重量/WEIGHT	1:200
		比例/SCALE	
		设计/DESIGNED	
		校对/CHECKED	
		审核/VERIFIED	
		批准/APPROVED	
		日期/DATE	

设计单位: 中远海运重工有限公司
设计日期: 2024.08.01